

Monthly Weather Summary in Thailand February 2019

In February 2019, the high pressure area from China periodically extended its ridge to cover upper Thailand in addition with the prevailing of the northeast monsoon over southern Thailand and the Gulf of Thailand during the first half of the month and southeasterly wind prevailed over upper Thailand almost the month. Moreover, the westerly trough moved through the northern part for few days. These caused cool weather in the morning over Thailand and cold weather in upper northern part whereas cool weather in some areas for the central and eastern parts. During late month, the heat low pressure cell covered upper Thailand accompanied with the monsoon have changed to the easterly and southeasterly wind over Thailand caused temperature increasing over Thailand and continuously hot weather in several areas that considered as the beginning of the 2019 hot season on February 21. Monthly mean temperature over Thailand was 1.5 °C, above normal. For rainfall, most parts of the country got less rain than normal whereas northern and northeastern parts was higher than normal 26% and 15%, respectively affected by thunderstorm with heavy to very heavy rainfall was reported during the middle and the end of the month. Monthly rainfall was above normal i.e. northern part 2.7 mm (26%) and northeastern part 2.7 mm (15%) while it was below normal in central parts 5.7 mm (46%), eastern part 11.4 mm (39%), southern part (east coast) 19.1 mm (55%) and southern part (west coast) 19.4 mm (71%). The details are as follows:

1–10 February: Under the ridge of moderate high pressure area covered northern part, northeastern part and the South China Sea on the first day of the period and later weakened associated with westerly wind blew into the northern and upper northeastern parts and southeasterly wind prevailed over lower northeastern, central and eastern parts during the middle and the end of the period. Moreover, the weak northeast monsoon prevailed over the Gulf of Thailand and the south throughout the period. These caused cold weather nearly the whole areas in the upper northern part whereas general cool weather with cold weather in some areas of northeastern part during the first half of the period after that temperature increased while cool weather was present in several areas for the rest parts. The minimum temperature of the period was 9.5 °C at Thung Chang in Nan province on February 9. In the mountainous areas and mountaintops, the weather was cold to very cold and temperature climbed down to 3.1 °C at Doi Inthanon in Chiang Mai province on February 9. For rainfall, there was rainfall in some areas of upper Thailand for few days except for isolated rain in eastern part with heavy rainfall in some areas mainly in the lower coastal areas and the maximum daily rainfall of 98.4 millimeter at Amphoe Ko Kut in Trat province on February 4. While isolated to scattered rain was found in southern part with heavy rainfall in some areas during the first half of the period. The highest daily rainfall was 88.4 millimeter at Amphoe Bacho in Narathiwat province on February 2.

11-20 February : The moderate high pressure area from China extended its ridge to cover upper Thailand and the South China Sea during early period and later weakened coupled with the prevailing of the southerly and southeasterly wind over upper Thailand and westerly trough moved through the northern and upper northeastern parts during mid-period. The weather in the northern and northeastern parts remained cool in the morning with cold in some areas of upper northern part and cool in some areas in central and eastern parts. The lowest minimum temperature was 12.1 °C at Amphoe Thung Chang in Nan province on February 12 and dropped to 3.4 °C in areas of mountain top at Kew Mae Pan, Chom Thong in Chiang Mai province on February 11. During daytime, temperature was increased nearly the whole areas. For rainfall, scanty rainfall was found in upper Thailand with heavy rainfall in some areas except for during mid-period that scattered to fairly widespread rain with heavy rainfall in some areas of

northern and northeastern parts. The highest daily rainfall was 84.7 millimeter at Amphoe Lan Drabue in Kamphaeng Phet province on February 11. For southern Thailand, generally cool weather nearly the whole period and isolated to scattered rain was found during early period and last period that effected by the prevailing of the northeast monsoon over the Gulf of Thailand and southern part during the first half of the period after that the easterly wind prevailed over the mentioned areas. The maximum daily rainfall was 50.0 millimeter at Amphoe Mai Kaen in Pattani province on February 19.

21–28 February : Affected by the heat low pressure cell covered upper Thailand since mid-period. In addition, the southerly and southeasterly wind prevailed over upper Thailand throughout the period and the westerly wind effected over the upper northern part during early period and mid-period furthermore the easterly wind prevailed over the Gulf of Thailand and southern part almost the period. By the way, the high pressure areas from China extended it ridge to cover upper northeastern part and the South China Sea on February 25 and 26. The weather in the northern and northeastern parts remained cool in the morning with cold in some areas of upper northern part. The lowest minimum temperature was 11.8 °C at Amphoe Mae Sariang in Mae Hong Son province on February 21 and dropped to 3.0 °C in areas of mountain top at Kew Mae Pan, Chom Thong in Chiang Mai province on February 21. During daytime, hot weather nearly the whole areas of the upper Thailand and the highest maximum temperature was 39.7 °C at Amphoe Thoen in Lampang province on February 24. For rainfall, there was rainfall in upper Thailand during the second half of the period especially northern and northeastern parts that isolated to scattered rain. The maximum daily rainfall in upper Thailand was 97.0 millimeter at Amphoe Phu Wiang in Khon Kaen province on February 26. Thundershower occurred at Kamphaeng Phet, Phetchabun, Ubon Ratchathani, Nong Khai, Chatyaphum and Lop Buri provinces and hail was reported at Loei, Nakhon Phanom, Udon Thani and Khon Kaen provinces on February 25. In southern part, isolated light rain for few days along east coast. The highest daily rainfall was 11.4 millimeter at Amphoe Waeng in Narathiwat province on February 21.

Note : Rainfall, temperatures and natural disasters in this report were updated up to March 5, 2019.

Climate Center
Meteorological Development Division
Meteorological Department

Monthly Current Report
Rainfall and Accumulative Rainfall
February 2019

Northern Thailand

Station	Temperature (°c)		Rainfall (mm)		Accumulative rainfall (mm) Since 1 January	
	Mean	Above or below normal	Actual	Above or below normal	Actual	Above or below normal
Chiang Rai	23.2	1.6	0.0	-13.8	65.1	43.8
Mae Hong Son	22.9	0.3	0.0	-6.0	55.4	43.0
Phayao	23.3	0.5	0.0	-9.2	30.8	15.9
Chiang Mai	25.3	1.4	0.0	-8.9	67.8	54.7
Tha Wang Pha	23.8	1.3	2.6	-6.4	25.9	9.9
Nan	25.1	1.5	3.3	-8.6	92.5	76.2
Lamphun	24.7	0.4	0.0	-4.9	38.6	30.9
Lampang	25.9	1.2	9.6	0.8	36.5	24.9
Mae Sariang	22.7	0.5	0.0	-6.5	46.7	38.7
Phrae	26.0	1.4	6.9	-1.9	39.6	25.0
Uttaradit	27.5	1.4	5.4	-9.1	11.0	-9.0
Bhumibol Dam	28.0	1.3	0.0	-6.9	8.5	-1.0
Tak	28.6	1.3	0.0	-8.7	14.3	3.5
Mae Sot	26.0	1.5	0.0	-8.2	32.0	22.1
Umphang	23.2	1.6	15.9	6.8	18.2	2.3
Phitsanulok	27.5	0.5	94.5	81.0	114.7	97.3
Lom Sak	27.5	1.6	42.9	25.8	42.9	21.0
Phetchabun	28.2	1.7	33.6	17.5	33.6	11.9
Wichian Buri	29.2	1.7	17.2	4.6	17.2	-3.1
Kamphaeng Phet	28.3	1.5	30.3	17.2	33.0	17.6
Over the area	25.8	1.2	13.1	2.7 26%	41.2	26.2 175%

Northeastern Thailand

Station	Temperature (°c)		Rainfall (mm)		Accumulative rainfall (mm) Since 1 January	
	Mean	Above or below normal	Actual	Above or below normal	Actual	Above or below normal
Nong Khai	27.6	2.7	64.6	47.3	64.6	39.0
Loei	26.0	1.8	27.5	11.4	27.5	5.2
Udon Thani	27.3	2.0	55.2	33.2	55.2	26.9
Nakhon Phanom	27.5	3.1	20.8	-10.2	20.8	-13.2
Sakon Nakhon	27.3	2.9	19.7	-9.6	19.7	-14.3
Mukdahan	28.4	3.5	70.1	52.7	70.1	49.0
Khon Kaen	28.7	2.8	13.9	-7.5	13.9	-11.5
Kosum Phisai	28.9	3.1	26.9	11.9	26.9	8.4
Roi Et	29.1	3.4	10.8	-8.4	10.8	-12.0
Chaiyaphum	29.6	2.9	1.5	-12.8	1.5	-17.3
Ubon Ratchathani	29.4	2.9	0.0	-15.4	0.0	-17.4
Tha Tum	28.8	2.6	2.1	-14.0	2.1	-19.1
Surin	29.6	3.0	7.5	-4.0	7.5	-9.6
Nakhon Ratchasima	29.8	2.9	13.3	-2.8	13.3	-11.0
Chok Chai	29.4	2.9	1.0	-13.8	1.0	-17.8
Nang Rong	29.0	2.6	3.8	-15.8	3.8	-20.5
Over the area	28.5	2.8	21.2	2.7 15%	21.2	-2.1 -9%

- NOTES :
- 1) Mean temperature is the average of daily dry-bulb temperature
 - 2) "T" is trace, rainfall amount less than 0.1 mm.
 - 3) "blank" is incomplete data.
 - 4) Temperature and rainfall are preliminary data.

Monthly Current Report
Rainfall and Accumulative Rainfall
February 2019

Central Thailand

Station	Temperature (°c)		Rainfall (mm)		Accumulative rainfall (mm) Since 1 January	
	Mean	Above or below normal	Actual	Above or below normal	Actual	Above or below normal
Nakhon Sawan	29.6	1.5	41.7	29.8	41.7	25.5
Bua Chum	29.4	2.0	4.2	-4.9	4.2	-11.6
Lop Buri	29.4	1.3	2.5	-4.4	2.5	-10.1
Suphan Buri	29.2	1.8	0.0	-6.9	0.8	-9.8
Thong Pha Phum	28.5	1.7	0.2	-16.2	1.6	-20.2
Kanchanaburi	29.8	1.8	4.2	-14.0	13.3	-8.2
Bangkok Airport	29.7	1.4	0.0	-9.0	0.8	-19.6
Bangkok Metropolis	29.5	1.2	0.0	-20.0	1.1	-32.2
Over the area	29.4	1.6	6.6	-5.7 -46%	8.3	-10.7 -56%

Eastern Thailand

Station	Temperature (°c)		Rainfall (mm)		Accumulative rainfall (mm) Since 1 January	
	Mean	Above or below normal	Actual	Above or below normal	Actual	Above or below normal
Prachin Buri	30.1	1.9	0.8	-15.0	0.8	-22.7
Kabin Buri	29.3	1.5	13.4	-11.5	13.4	-20.5
Aranyaprathet	30.2	2.0	0.1	-27.5	0.1	-32.9
Chon Buri	29.1	1.1	40.7	26.4	44.3	20.1
Ko Sichang	28.8	1.2	2.6	-13.1	2.6	-24.0
Pattaya	28.1	0.8	50.3	36.0	58.0	28.1
Sattahip	28.3	0.8	4.3	-15.1	48.4	3.4
Rayong	28.7	0.8	6.3	-30.2	11.2	-46.0
Chanthaburi	28.8	1.5	12.1	-24.3	12.1	-43.0
Khlong Yai	28.4	1.2	46.7	-39.3	48.1	-75.1
Over the area	29.0	1.3	17.7	-11.4 -39%	23.9	-21.3 -47%

- NOTES :
- 1) Mean temperature is the average of daily dry-bulb temperature
 - 2) "T" is trace, rainfall amount less than 0.1 mm.
 - 3) "blank" is incomplete data.
 - 4) Temperature and rainfall are preliminary data.

Monthly Current Report
Rainfall and Accumulative Rainfall
February 2019

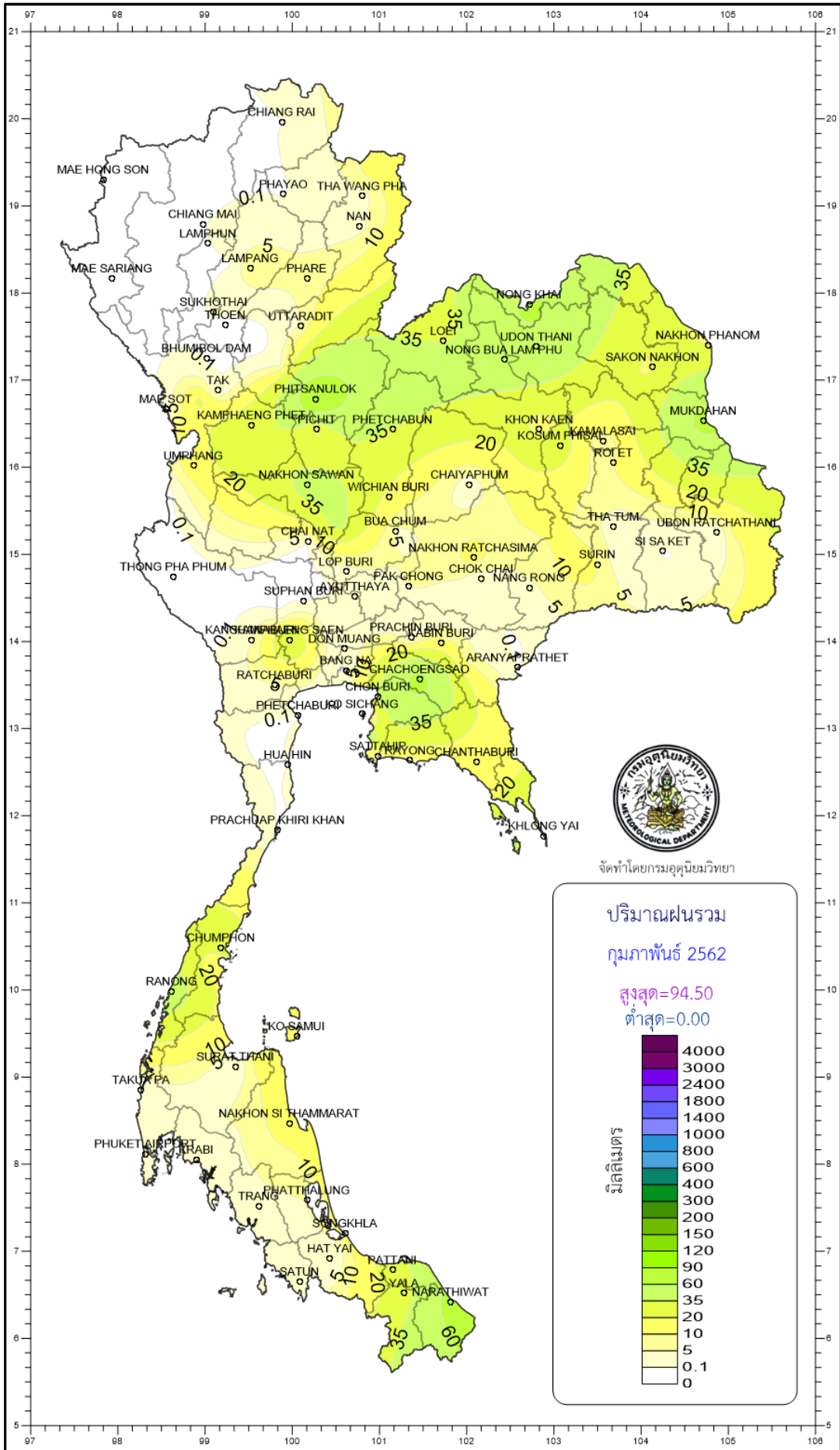
Southern Thailand, east coast

Station	Temperature (°c)		Rainfall (mm)		Accumulative rainfall (mm) Since 1 January	
	Mean	Above or below normal	Actual	Above or below normal	Actual	Above or below normal
Phetchaburi	29.1	1.9	0.0	-3.9	8.8	-6.5
Hua Hin	28.2	1.0	0.1	-15.2	11.8	-15.3
Prachuap Khiri Khan	27.8	1.2	0.0	-21.8	117.2	71.0
Chumphon	27.2	0.5	27.2	-17.5	268.7	164.6
Surat Thani	26.9	0.5	0.0	-12.3	109.3	60.2
Ko Samui	28.0	0.6	12.0	-42.4	234.6	94.0
Nakhon Si Thammarat	27.0	0.5	16.6	-51.6	434.7	221.1
Songkhla	28.1	0.6	14.7	-33.9	185.9	62.5
Hat Yai Airport	27.4	0.7	1.8	-22.6	114.0	35.8
Pattani Airport	27.4	0.9	27.2	-4.8	274.1	191.2
Narathiwat	27.0	0.4	69.5	15.8	309.4	154.1
Over the area	27.6	0.8	15.4	-19.1 -55%	188.0	93.8 100%

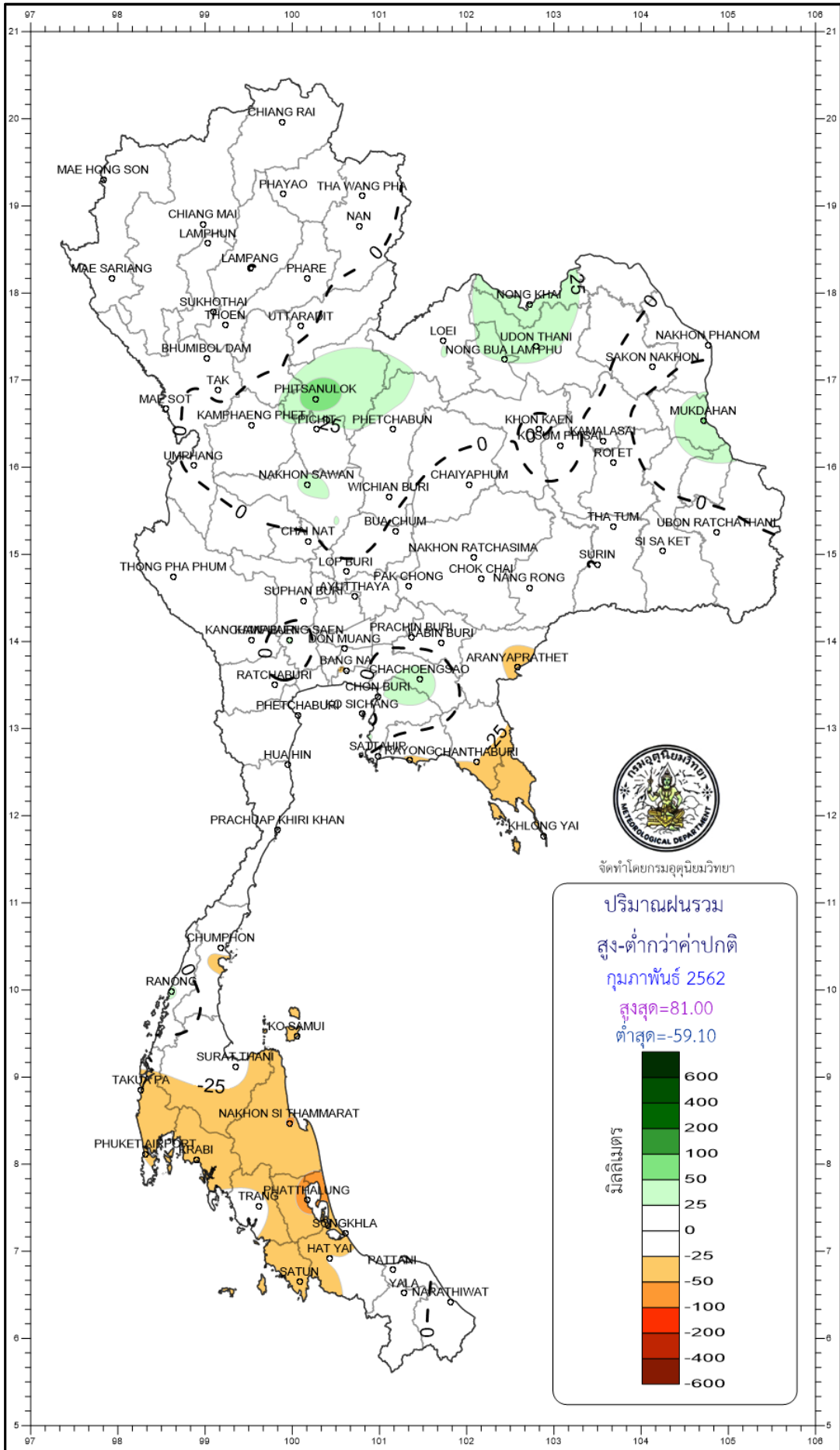
Southern Thailand, west coast

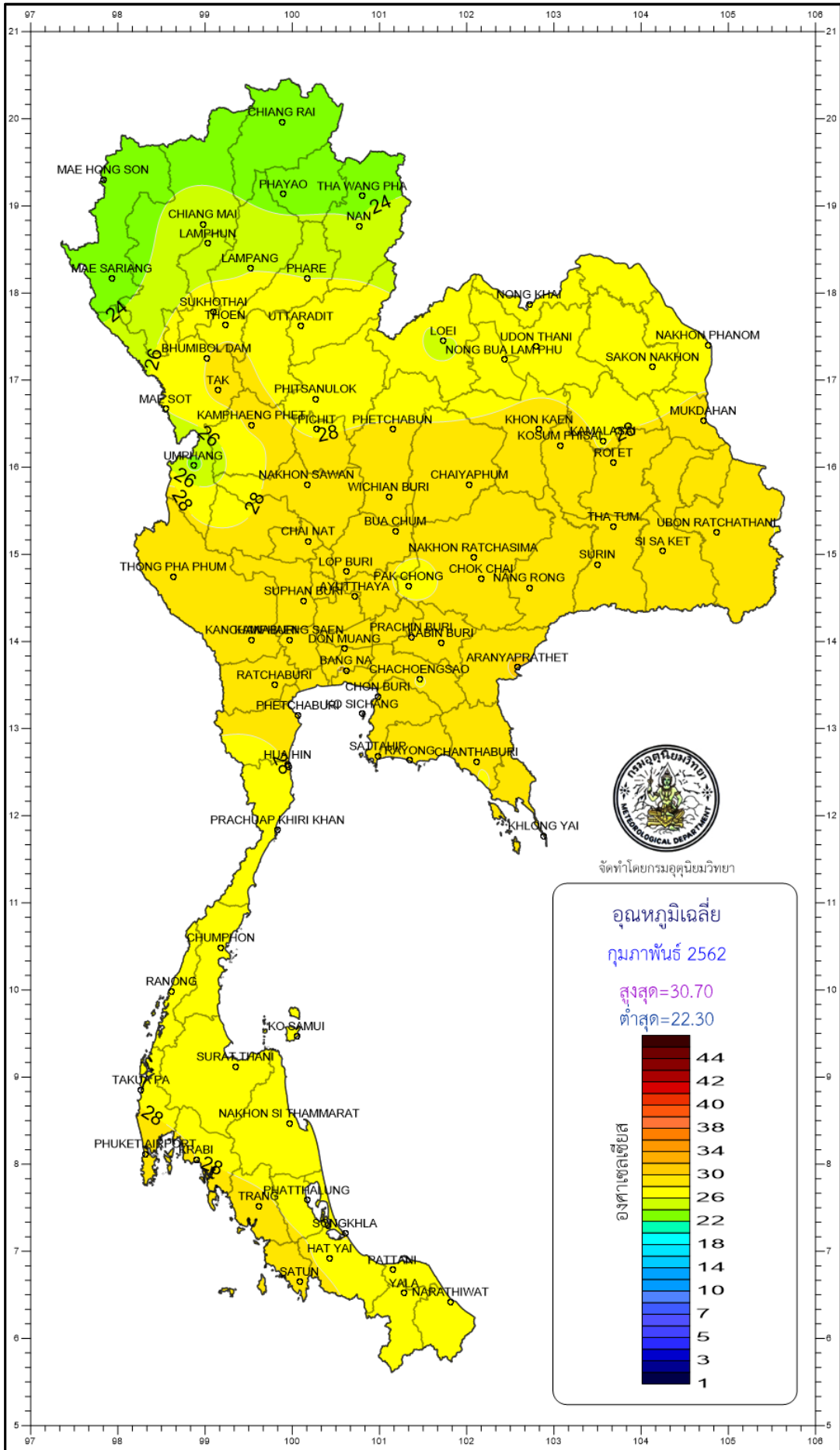
Station	Temperature (°c)		Rainfall (mm)		Accumulative rainfall (mm) Since 1 January	
	Mean	Above or below normal	Actual	Above or below normal	Actual	Above or below normal
Ranong	27.8	0.3	46.7	30.7	107.9	81.9
Takua Pa	27.8	0.8	1.1	-40.0	109.7	29.2
Phuket	30.0	1.3	0.4	-23.5	50.6	-3.6
Phuket Airport	28.7	1.0	1.5	-25.7	182.1	118.7
Ko Lanta	28.7	0.5	0.8	-17.2	12.0	-20.9
Trang Airport	28.4	0.9	4.0	-16.8	60.7	7.4
Satun	28.9	0.8	2.5	-43.3	47.0	-20.0
Over the area	28.6	0.8	8.1	-19.4 -71%	81.4	27.5 51%

- NOTES :
- 1) Mean temperature is the average of daily dry-bulb temperature
 - 2) "T" is trace, rainfall amount less than 0.1 mm.
 - 3) "blank" is incomplete data.
 - 4) Temperature and rainfall are preliminary data.

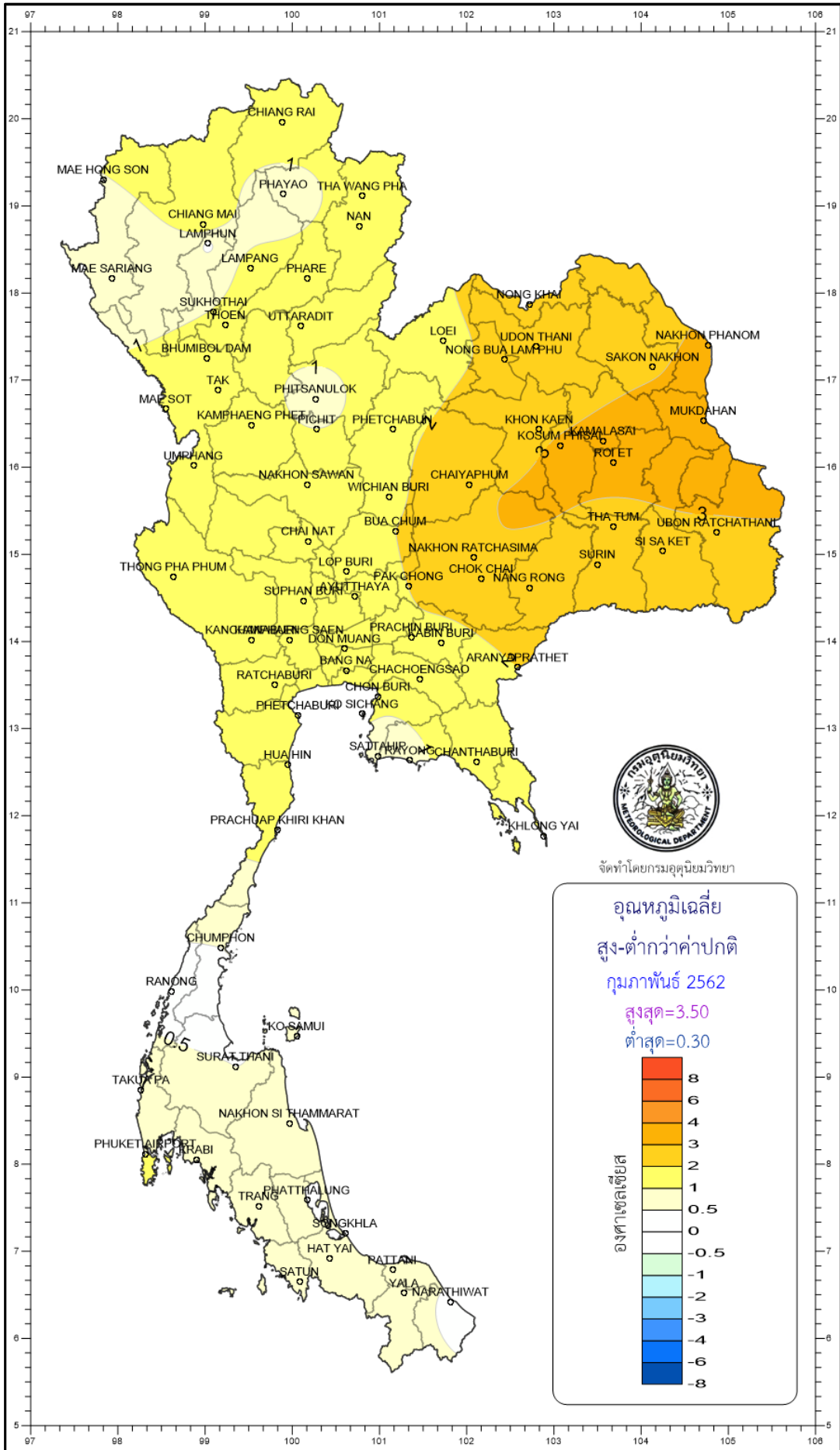


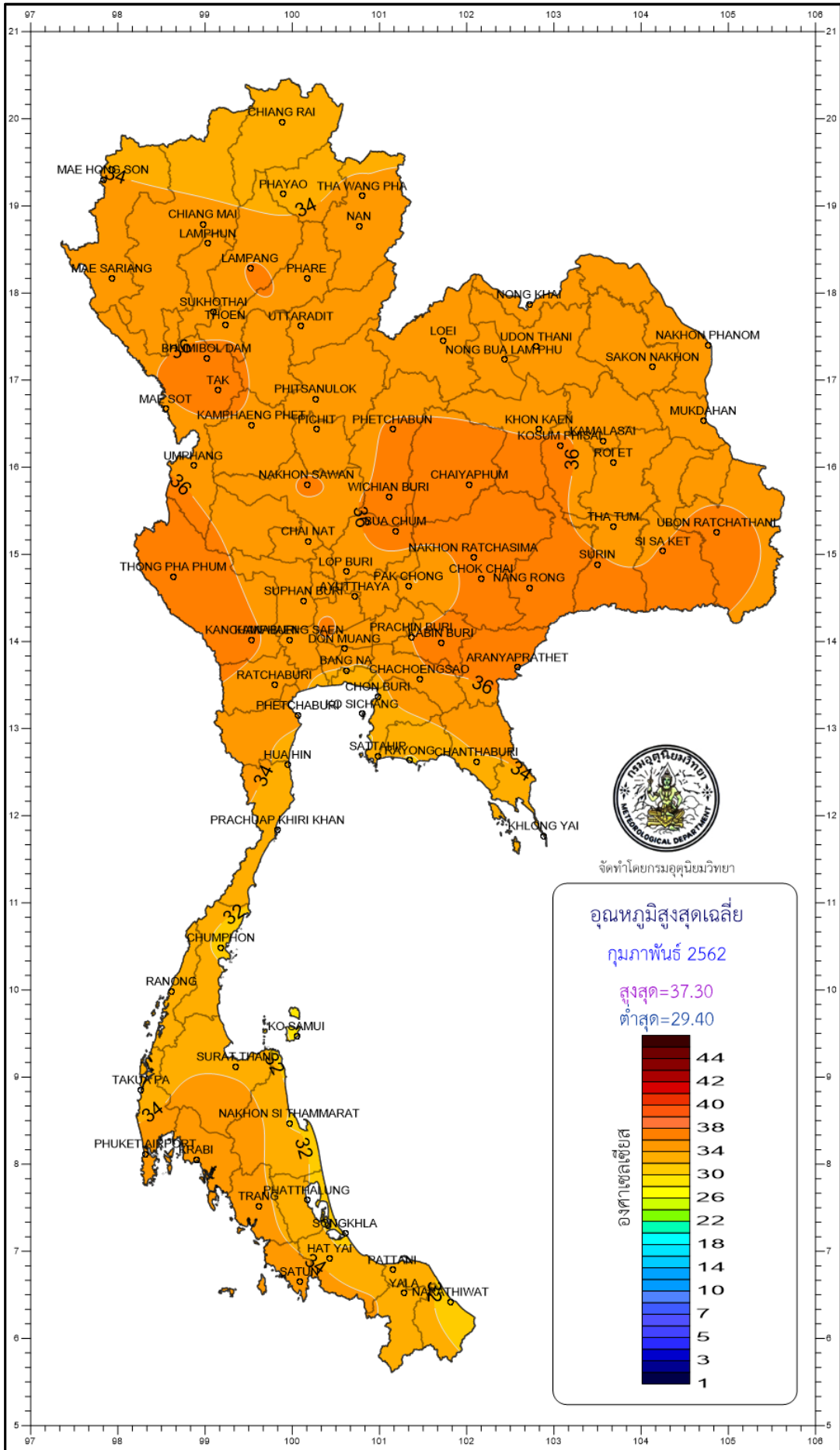
จัดทำโดยกรมอุตุนิยมวิทยา



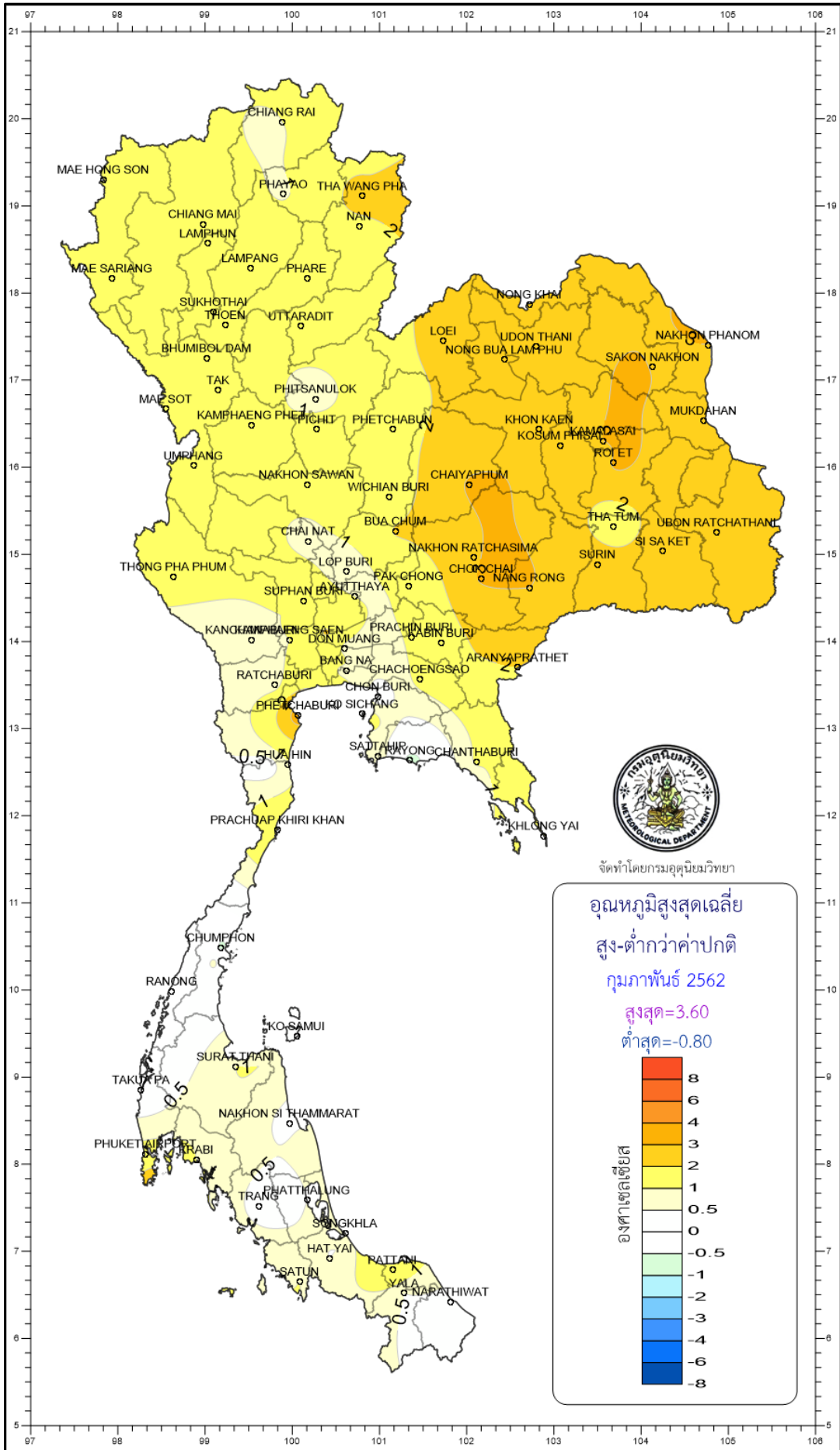


จัดทำโดยกรมอุตุนิยมวิทยา





จัดทำโดยกรมอุตุนิยมวิทยา



จัดทำโดยกรมอุตุนิยมวิทยา

